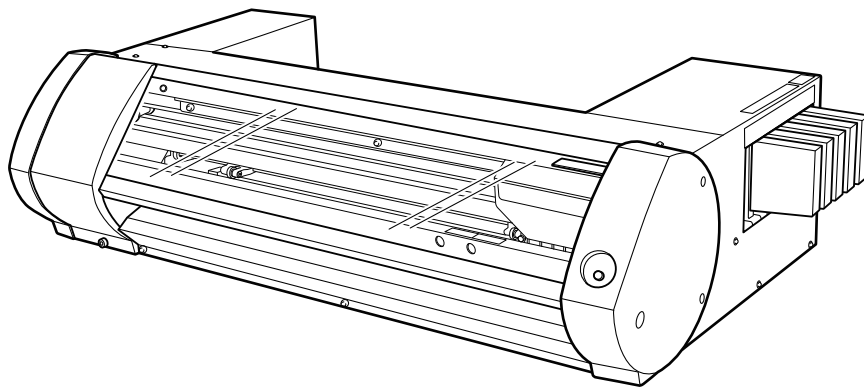


VersaSTUDIO

BN-20D

Installation and Initial Settings



Thank you very much for purchasing this product.

- To ensure correct and safe usage with a full understanding of this product's performance, please be sure to read through this manual completely and store it in a safe location.
- Unauthorized copying or transferal, in whole or in part, of this manual is prohibited.
- The specifications of this product and the contents of this operation manual are subject to change without notice.
- The operation manual and the product have been prepared and tested as much as possible. If you find any misprints or errors, please inform us.
- Roland DG Corporation assumes no responsibility for any direct or indirect loss or damage that may occur through use of this product, regardless of any failure to perform on the part of this product.
- Roland DG Corporation assumes no responsibility for any direct or indirect loss or damage that may occur with respect to any article made using this product.

Contents

Installing the Software	2
Important Notes.....	3
System Requirements	4
Software to Install	5
Downloading Software	6
Installing the Software.....	7
Extracting Files from the Zip File.....	7
Installing Driver and Utility	7
Downloading VersaWorks 6	8
Initial Printer Settings	9
Setting up the Printer	10
Installing the Blade	12
Loading Roll Media.....	15
Adjustments before Output	20
Starting Adjustments	20
Checking for Nozzle Drop-out	21
Performing Bidirectional Adjustment	23
Correcting Media Feeding	24
Outputting Printing Data.....	25
About the Documentation for This Machine.....	26

Installing the Software

Important Notes	3
System Requirements	4
Software to Install.....	5
Downloading Software	6
Installing the Software.....	7
Extracting Files from the Zip File.....	7
Installing Driver and Utility.....	7
Downloading VersaWorks 6.....	8

Important Notes

IMPORTANT

Do not connect this machine and the computer with a USB cable before installing the BN-20D driver.
If you order these operations incorrectly, you may not be able to install the BN-20D driver.

IMPORTANT

Do not connect multiple instances of this machine to one computer.
The utilities cannot control multiple machines at the same time.

System Requirements

Prepare a computer that matches the requirements.

BN-20D

Operating system (OS)	Windows 11, Windows 10 (64-bit edition)
CPU	2.0 GHz or faster Intel Core 2 Duo recommended
Memory	2.0 GB or more
Video card, monitor	Resolution of 1,024 × 768 or more and 256 or more colors recommended

- This software is a 32-bit application and therefore runs in WOW64 (Windows-On-Windows 64) when running on 64-bit editions of Windows operating systems.

For the latest information, visit the Roland DG Corporation website (<https://www.rolanddg.com/>).

VersaWorks 6

For details, see the VersaWorks 6 Installation Guide.

RELATED LINKS

- <https://downloadcenter.rolanddg.com/VersaWorks6>

Software to Install

BN-20D Driver	Driver required for sending data from a computer to the machine.
BN-20D Utility	Software that performs operations such as operating the machine, checking its status, and performing maintenance on it.
VersaWorks 6	Software that creates the output data.

Downloading Software

Download the software on the computer to connect to the machine.

Procedure


1. Start the computer, and then log on with an account with "Administrator" rights.
If you do not have these rights, ask the administrator to perform this work.

MEMO

Only the account with "Administrators" rights that was used to install this software can use it.

2. Access the following URL.
<https://downloadcenter.rolanddg.com/BN-20D>



3. Open the [Software] tab, and then click  on the right to download the software.
Enter and send the necessary information to display the software download screen.
Check that the following files have been saved.
 - Roland_DG_Software_Package_for_BN-20D.zip
 - VersaWorks 6 Installer Package.exe
 - VW2018_INS_EN.pdf

Installing the Software

Extracting Files from the Zip File

Procedure

1. Right-click [Roland_DG_Software_Package_for_BN-20D.zip], and then click [Extract All].
2. Click [Browse], specify the folder in which to extract the files, and then click [Extract].

Installing Driver and Utility

IMPORTANT

Driver and Utility are pieces of dedicated software for the BN-20D.
This software cannot be used on a computer that has been connected to a BN-20 or BN-20A in the past.

Procedure

1. Double-click the extracted folder [Roland_DG_Software_Package_for_BN-20D].
2. Double-click [menu.exe].
3. Click [Install].

When the [User Account Control] window appears, click [Yes] (or [Allow]). The setup menu screen appears automatically.

4. Select the model name and the port to start setup.
 - (1) Select [Install].
 - (2) Select [Roland BN-20D] for [Model Name].
 - (3) Select [USB] for [Port].
 - (4) Click [Start].
5. Click [Next].
6. Follow the on-screen instructions to complete the installation of Driver and Utility.

Downloading VersaWorks 6

- Double-click [VersaWorks 6 Installer Package.exe].

For the subsequent steps of the installation procedure, see the VersaWorks Installation Guide.

RELATED LINKS

- <https://downloadcenter.rolanddg.com/VersaWorks6>

Initial Printer Settings

Setting up the Printer	10
Installing the Blade.....	12
Loading Roll Media	15
Adjustments before Output	20
Starting Adjustments	20
Checking for Nozzle Drop-out	21
Performing Bidirectional Adjustment	23
Correcting Media Feeding.....	24
Outputting Printing Data	25

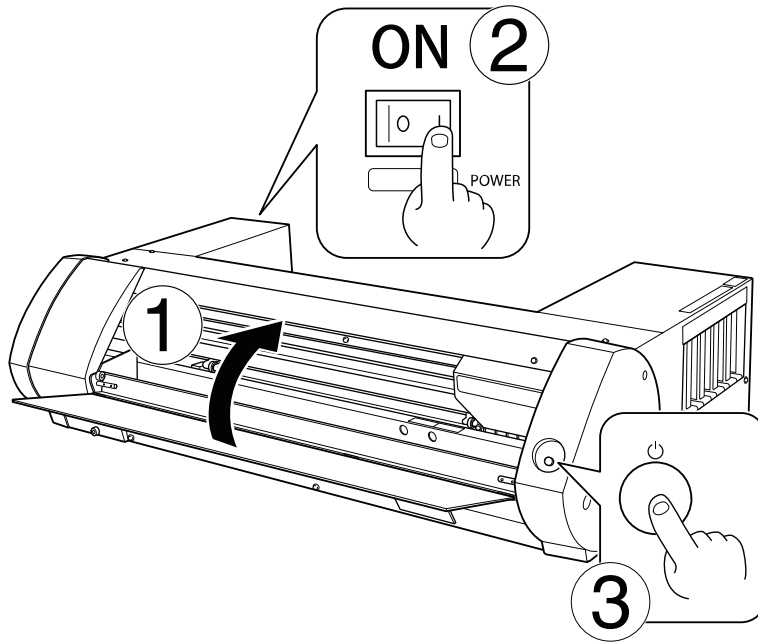
Setting up the Printer

Procedure

1. Perform the following operations in order.

- (1) Close the front cover.
- (2) Turn on the main power switch.
- (3) Select the [POWER] check box.

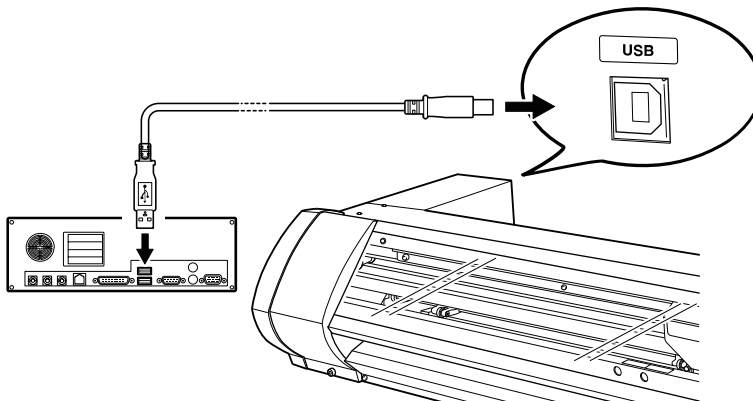
When the [POWER] key indicator changes from flashing to steady, startup is finished.



2. Connect the machine to the computer using the USB cable.

MEMO

- Remove the label affixed to the USB port on this machine.
- Use the included USB cable.
- Never use a USB hub.



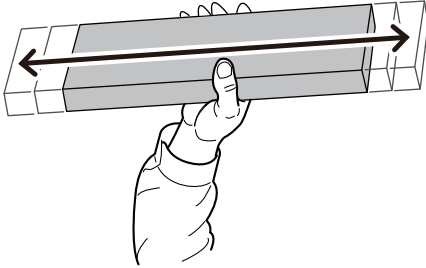
The driver installation starts automatically, and the [InkFill] screen appears.

3. Follow the instructions on the [InkFill] screen to start filling the machine with ink.

MEMO

Before inserting ink cartridges, shake each of them 50 times (about 20 seconds).

The precipitation of the ingredients in the ink disables printing in normal color. So that the ink mixes well, shake the ink cartridge horizontally with a stroke length of around 5 cm (2 in.) from each end of the ink cartridge.



The ink filling procedure is displayed on the Utility screen.

Thoroughly read the explanation on the screen before proceeding. The [POWER] key flashes while the machine is being filled with ink.

When the message [**The ink tanks have been filled**] appears, filling with ink is finished.

4. Click [Close].

Installing the Blade

MEMO

Use the following link to view a reference video for this procedure. We recommend that you view this video to understand the overall flow of work.

<https://youtu.be/Es4lmS4Yy3l>

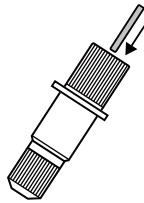


Procedure

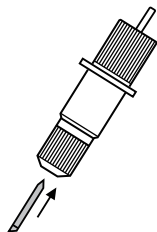
1. Insert a blade into the blade holder.

(1) Insert the pin into the blade holder.

Insert the pin until the tip protrudes about 3 to 5 mm (0.12 to 0.19 in.).

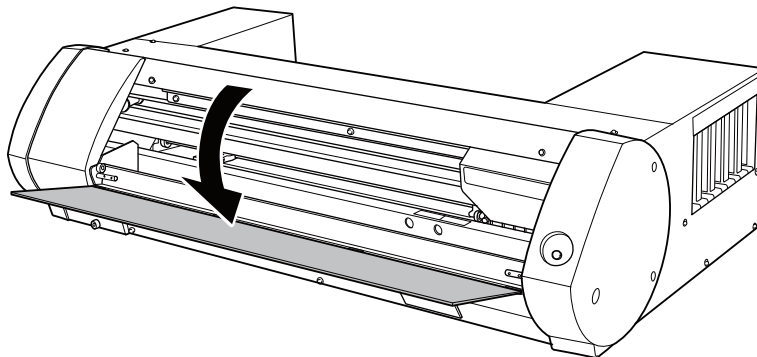


(2) Insert the blade into the blade holder.

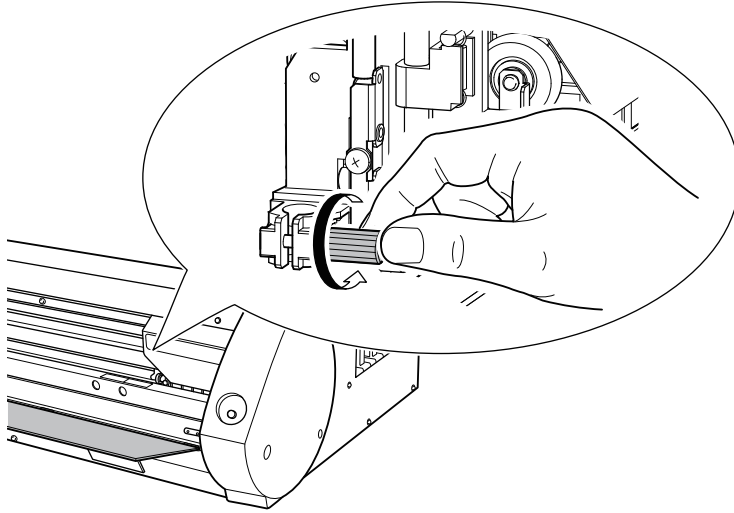


2. Install the blade holder into the cutting carriage.

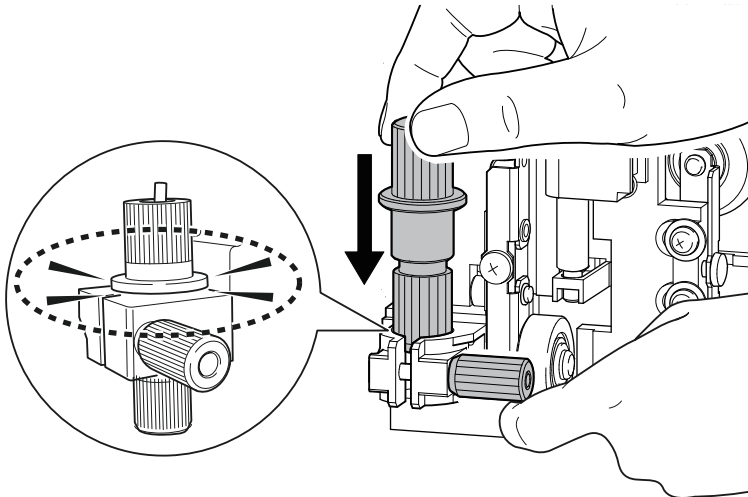
(1) Open the front cover.



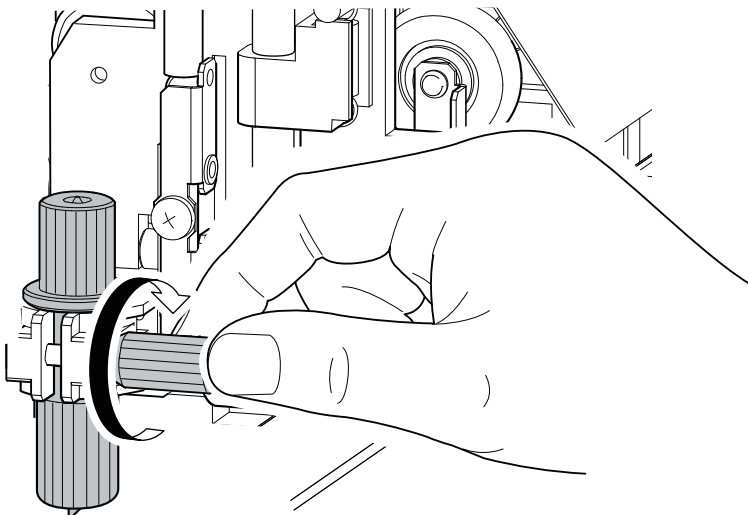
(2) Loosen the cutting carriage screw.



- 3. Support the screw from below and insert the blade holder into the cutting carriage.**
Failing to support the screw from below may compromise cutting quality.



- 4. Tighten the screw.**
Check that the screw does not come loose even when it is pulled up.



IMPORTANT

Tighten the cutting carriage screw lightly when no blade holder is installed. Keeping the screw firmly tightened causes the blade holder insertion hole to become gradually smaller, making installation difficult.

Loading Roll Media

Prepare roll media for printing and cutting and that meets the following conditions.

- Width: 150 to 515 mm (5.91 to 20.27 in.)
- Paper tube inner diameter: 3 or 2 in.

In this manual, the media wound around a paper tube is called "roll media." For information about purchasing media, contact your authorized dealer.

MEMO

For detailed information about how to install sheet media, such as standard-sized media, and about the usable media for this machine, see the "BN-20D User's Manual."

<https://downloadcenter.rolanddg.com/BN-20D>

MEMO

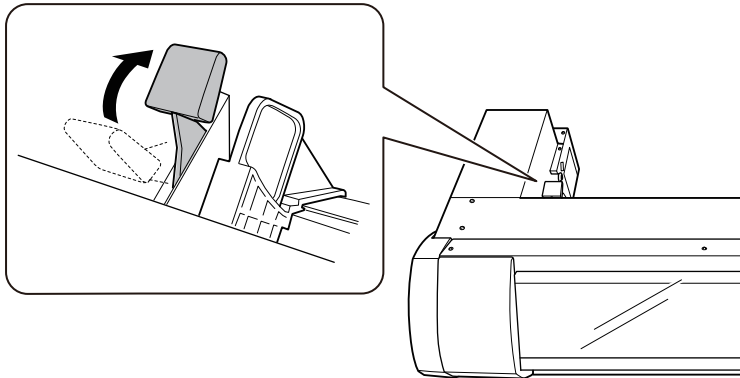
Use the following link to view a reference video for this procedure. We recommend that you view this video to understand the overall flow of work.

https://youtu.be/CZ75bp0_fp8

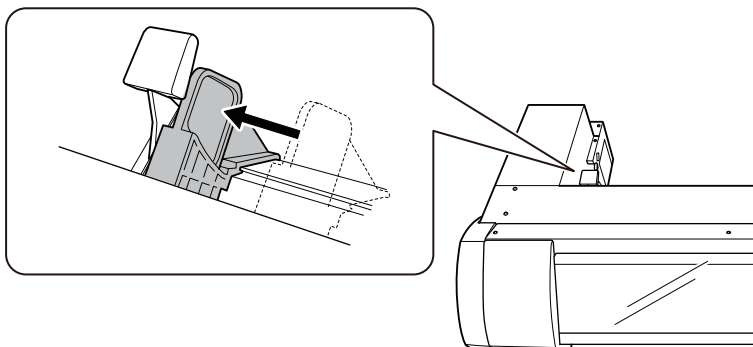


Procedure

1. Push the loading lever backward.



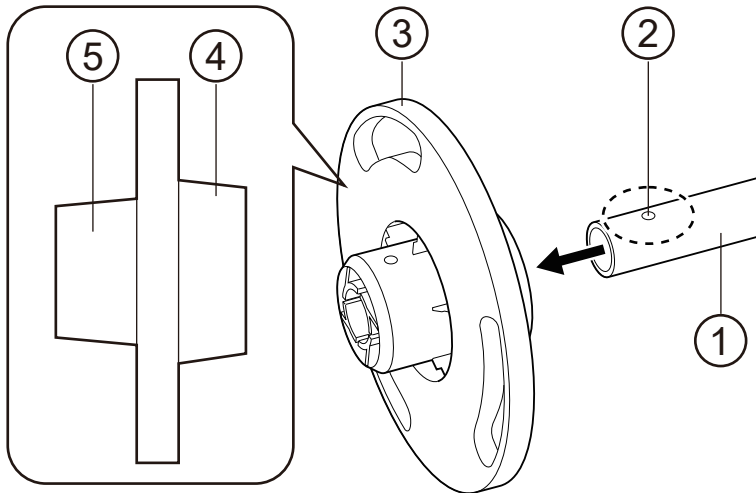
2. Move the left media guide to the left.



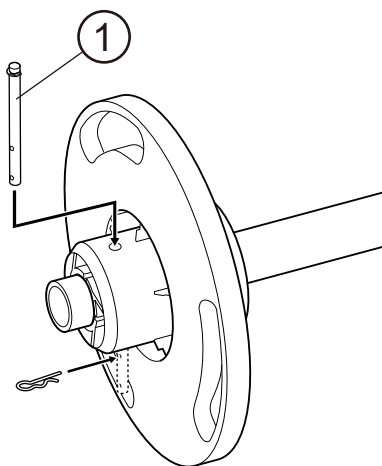
3. Attach the media bar (①) to the media flange (③).

Insert the side of the media bar with a hole (②) into the media flange.

When loading roll media with a 3-inch paper tube inner diameter, attach the media flange with ④ on the inside. When loading roll media with a 2-inch paper tube inner diameter, attach the media flange with ⑤ on the inside.



4. Secure the media flange and media bar with the mounting pin (①).

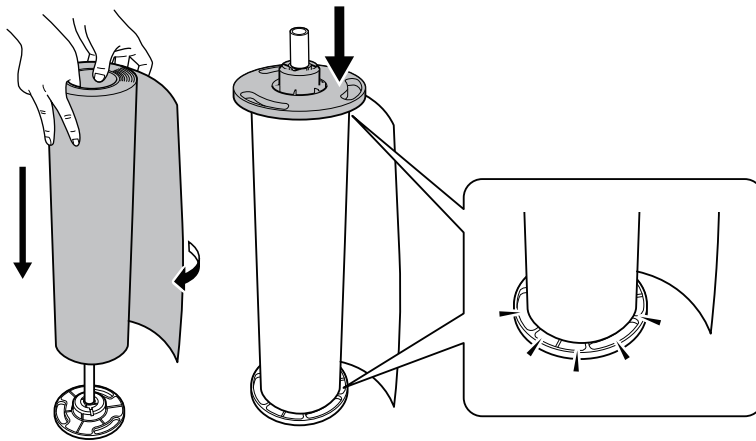


5. Load the roll media onto the media flange.

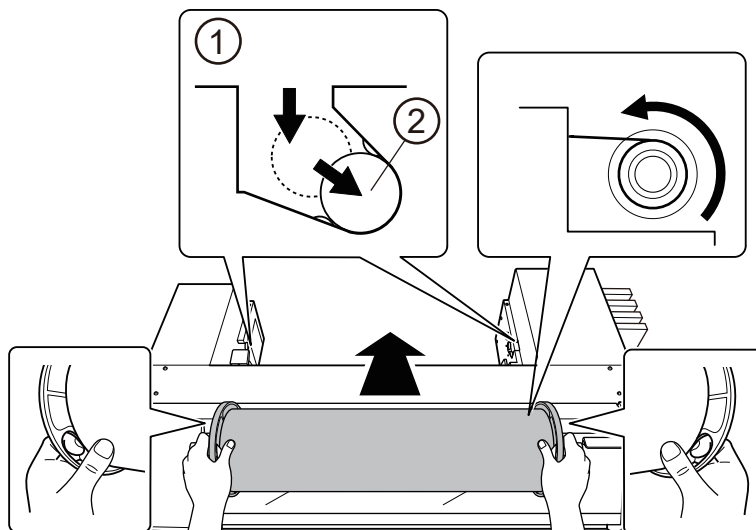
Install the roll media so there is no gap between it and the media flange.

MEMO

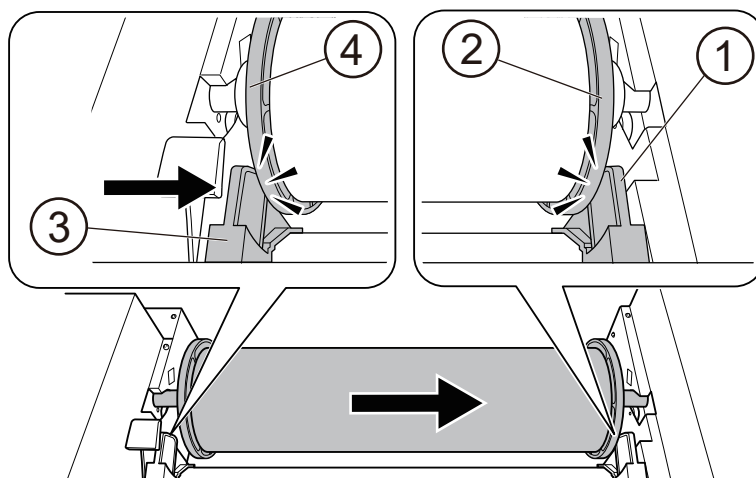
Put the secured media flange on the bottom so that the media is wrapped in the clockwise direction when seen from above. Media cannot be loaded correctly if it has the incorrect orientation.



- 6. Load the roll media on the printer.**
 Insert the media bar (②) into the guide (①).

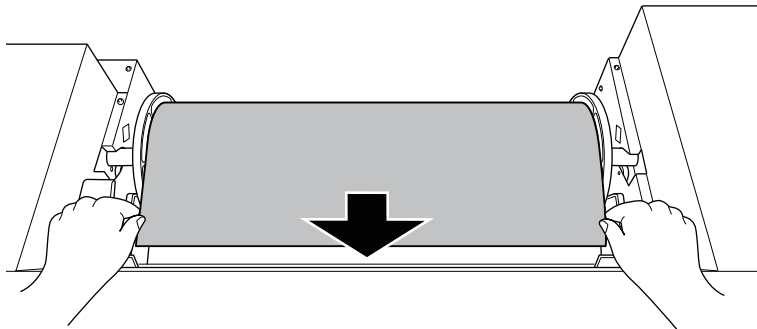


- 7. Adjust the loaded position of the roll media.**
 (1) Move the roll media to the right so the media flange (①) touches the right media guide (②).
 (2) Slide the left media guide (③) and press it against the media flange (④).

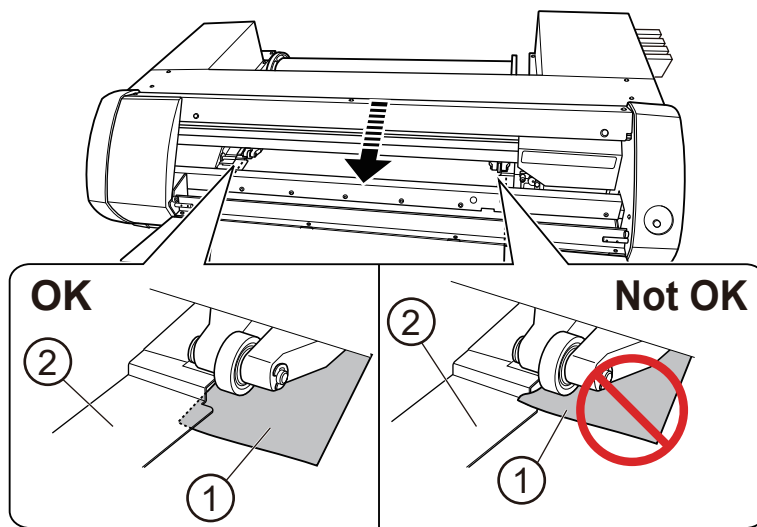


- 8. Load the media in the printer.**

- (1) Pull the media out straight so it does not sag.

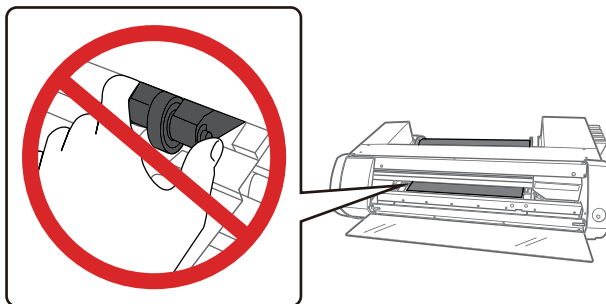


- (2) Pass the media (①) under the media clamps (②).

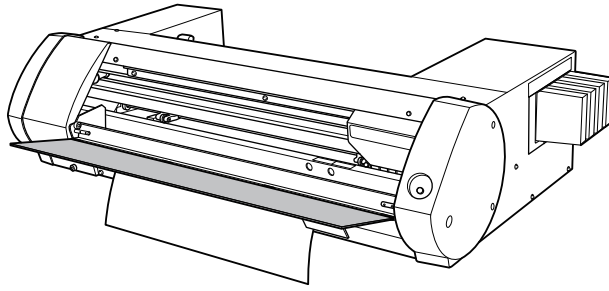


IMPORTANT

The pinch rollers cannot be moved directly by hand. Move them with the media guide. Attempting to forcibly move these rollers may result in injury.



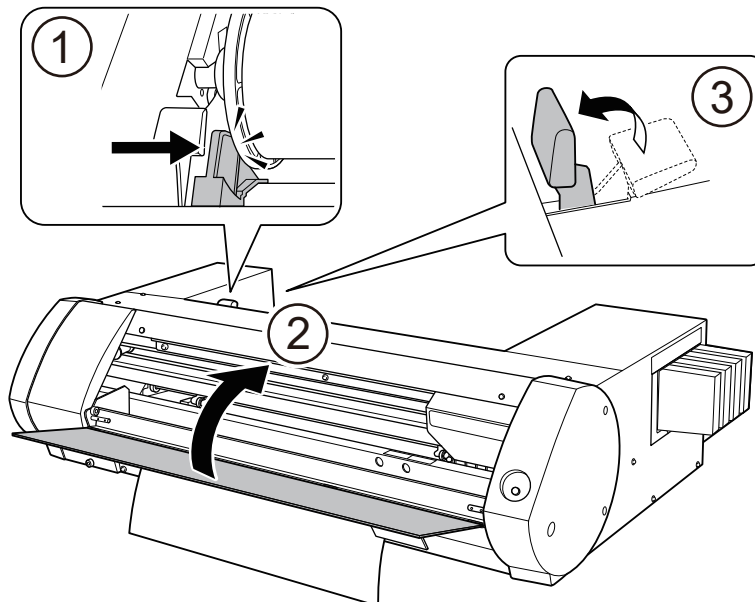
- (3) As shown in the figure, pass the media under the front cover and pull the media out the other side.



9. Start initial operation.

- (1) Check that the left media guide (①) is pressed against the media flange.
- (2) Close the front cover (②).
- (3) Pull the loading lever (③) forward.

Pulling the loading lever forward starts initial operation. When the [POWER] key changes from flashing to steady, initial operation is complete.



Adjustments before Output

Before output, perform a printing test and a cutting test and make various adjustments.

This work is required to obtain this machine's proper printing and cutting performance. Carry out this work before daily operations, when the media type is changed, and in similar situations.

MEMO


Use the following link to view a reference video for this procedure. We recommend that you view this video to understand the overall flow of work.

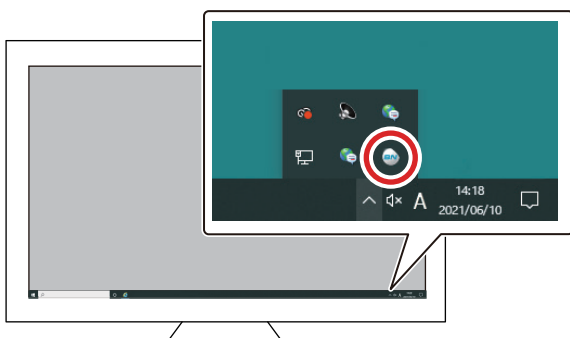
<https://youtu.be/S0W2tr8Fqg4>



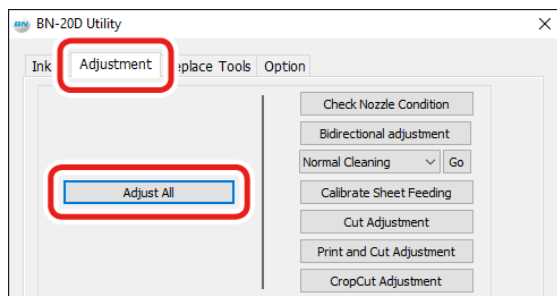
Starting Adjustments

Procedure

1. In the computer's notification area, click . BN-20D Utility appears.



2. On the [Adjustment] tab, click [Adjust All].



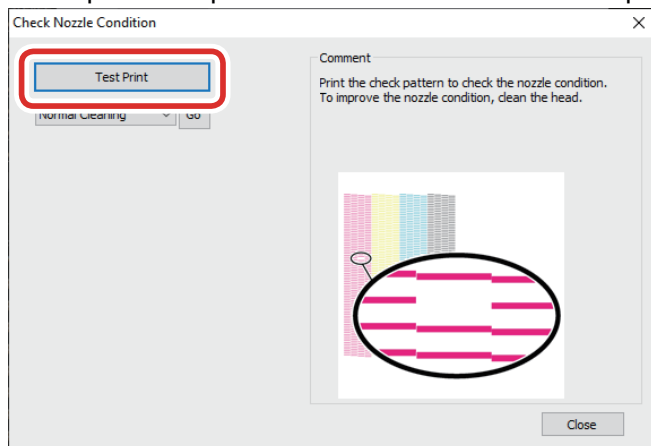
3. Click [Next] on the screen that is displayed.

Checking for Nozzle Drop-out

Procedure

1. Click [Test Print].

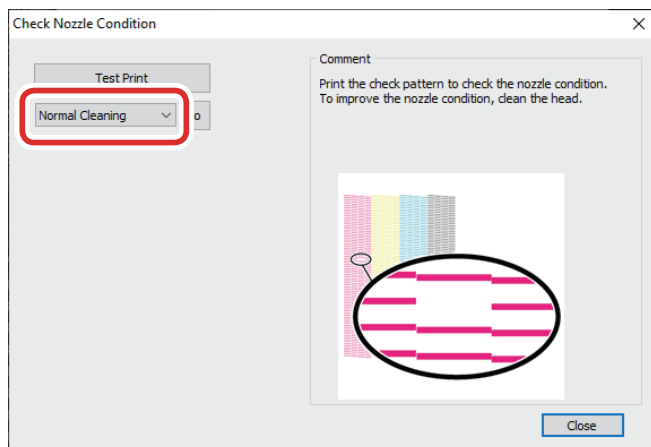
A test pattern is printed. Read the on-screen description and check for nozzle drop-out.



- If there is nozzle drop-out, proceed to step 2.
- If there is no nozzle drop-out, click [Close] and proceed to step 4.

2. Select [Normal Cleaning] and click [Go].

Normal cleaning will start.



3. In the same manner as step 1, click [Test Print] to check for nozzle drop-out again.

If the nozzle drop-out is still present, repeat the [Normal Cleaning].

For details on [Medium Cleaning] and [Powerful Cleaning], see the pages related to maintenance in the "BN-20D User's Manual."

MEMO

Even if nozzle drop-out occurs after cleaning, output quality will not be affected if this drop-out occurs in about two or three locations.

If you can confirm that the actual printing data can be printed without any problems, you can use the machine without any further adjustments.

4. Click [Next] on the screen that is displayed.

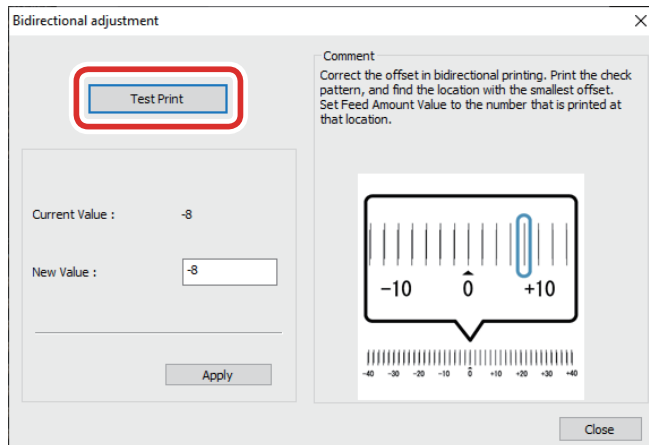
RELATED LINKS

- <https://downloadcenter.rolanddg.com/BN-20D>

Performing Bidirectional Adjustment

Procedure

1. Click [Test Print].
A test pattern is printed.

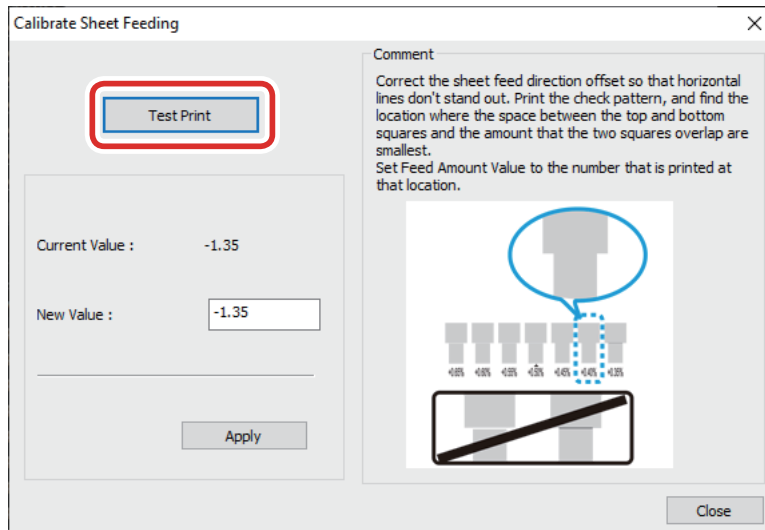


2. Read the on-screen description and enter the value for [New Value].
3. Click [Apply].
[Present Value] changes to the entered value.
4. Click [Close].
5. Click [Next] on the screen that is displayed.

Correcting Media Feeding

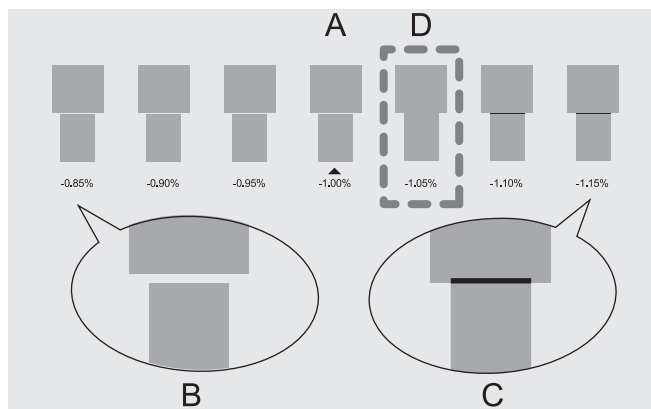
Procedure

1. Click [Test Print].
A test pattern is printed.



2. Read the on-screen description and enter the value for [New Value].

The current correction value (A) is that of the figure indicated by "▲." Select the value to make the gap (B) and overlap (C) between the upper/lower squares smallest. In the case of the following figure, select "-1.05%." When you cannot choose between two sequential numbers, specify a value that is between them.



3. Click [Apply].
[Present Value] changes to the entered value.
4. Click [Close].
5. Click [Skip] on the subsequent adjustment screens.
[Cut adjustment], [Print and Cut adjustment], and [Crop cut adjustment] are not necessary with this machine, so do not perform these adjustments here.

Outputting Printing Data

Try using VersaWorks 6 to output printing data. For the VersaWorks 6 installation procedure, see the VersaWorks 6 Installation Guide.

Procedure

1. Start VersaWorks 6.

- **Windows 11**
 - a. Click the [Start] menu on the computer.
 - b. Click [VersaWorks]>[VersaWorks].
- **Windows 10**
 - a. Click the [Start] menu on the computer.
 - b. Click [VersaWorks]>[VersaWorks].

2. Draw cutting lines in the output data.

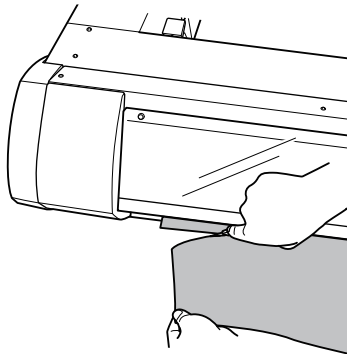
For information on how to use VersaWorks 6, see the "VersaWorks 6 User's Manual."

3. Output the printing data.

For information on how to use VersaWorks 6, see the "VersaWorks 6 User's Manual."

MEMO

Use a commercially available utility knife or something similar to separate the media.



RELATED LINKS

- [VersaWorks 6 Installation Guide/User's Manual](#)

About the Documentation for This Machine

The following manuals are included with the machine:

Paper manuals

- **Safety Precautions**
This manual contains important precautions for using the machine.
- **Quick Access Guide**
This guide contains the setup flow for this machine as well as links to representative details in the user's manual.

Electronic-format manuals

- **Installation Guide**
This guide contains details on how to install the machine.
- **Installation and Initial Settings (this document)**
This manual contains information on how to install the software used by this machine and how to configure the initial settings of this machine.
- **User's Manual**
This manual contains details such as how to use and maintain the machine as well as an FAQ (a set of frequently asked questions).
- **Maintenance Guide**
This guide contains details on the daily maintenance of this machine to maintain its stable output quality. We recommend that you print this guide and store it safely next to the machine.

MEMO

You can view and download the documentation for this machine from the following URL or QR code.
You can also view this website from a smartphone.

<https://downloadcenter.rolanddg.com/BN-20D>



