



DYE SUBLIMATION SOFTWARE THAT MAXIMIZES COLOR VIBRANCY AND SIMPLIFIES PRODUCTION WORKFLOW.

Ideal for shops of all sizes, entry-level to higher volume production shops looking to better manage their production workflow. Easy to use, professional color management software that includes print production tools not found in most sublimation software solutions. Digital Factory Sublimation Edition is designed specifically for your print requirements and enables you to get the job done quickly and easily!



CADlink
TECHNOLOGY CORPORATION
Making your machines run better.

LEADING EDGE COLOR MANAGEMENT AND PRODUCTION WORKFLOW TECHNOLOGY



DOWNLOAD A FREE FULLY FUNCTIONAL
TRIAL VERSION AT CADLINK.COM

DIGITAL FACTORY SUBLIMATION EDITION. DESIGNED FOR SIMPLICITY WITHOUT LIMITING FUNCTIONALITY.



Create patterns quickly and easily without requiring complex file preparation in design applications using the **STEP AND REPEAT** function. Automated creation of seamless, repeatable patterns instantly!



Save hours of layout time per week by creating design templates for regularly ordered products. Specify product size, printable design/text locations with the **CUSTOM TEMPLATE CREATION TOOL**.



Eliminate/reduce the need to prepare your print files using complicated third-party design applications. Digital Factory includes a variety of commonly used **IMAGE EDITING TOOLS**.



Taking printers to the next level. Optimize printer performance and print production with **CUSTOM DIRECT DRIVERS** available for many widely-used printers. Don't see your printer supported? You can still take advantage of all the production workflow features within the software by using standard Windows® driver printing directly through Digital Factory.

COMPLETELY VISUAL PRINT MANAGEMENT USER EXPERIENCE

Easily configurable print queue workflow. A simplified **SINGLE QUEUE INTERFACE** enables instant "out-of-the-box" printing in minutes. Add additional queues as your production volume increases with easy custom queue creation steps.

A centralized single window display provides easy access to all required production, job organization and color management tools.



Jobs can be added quickly and easily using flexible options including: send directly from widely-used design applications, drag and drop, or import.



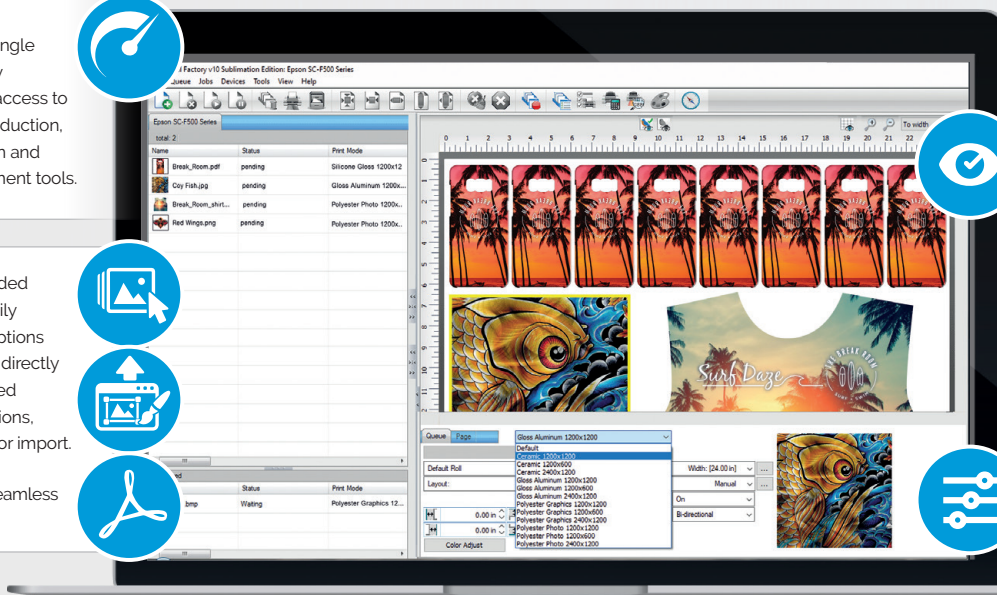
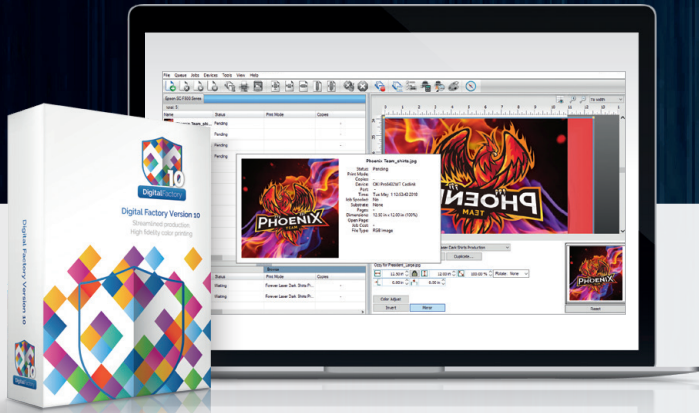
Also includes seamless .pdf file import



Complete visual preview of all jobs in print queue helps avoid costly print errors and helps ensure high quality production.



Direct access to commonly used job editing tools including color profiles



VIBRANT, DATE PRINTING HARD SURFACES

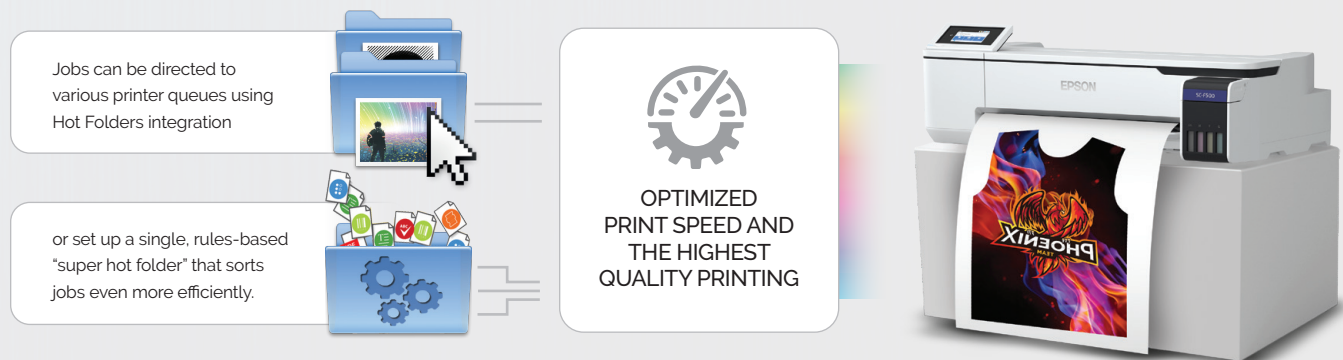
dition includes a
nt engine and
profiles that
color adjustments
or profiles that
use various
enabling the
materials.

The image displays a variety of custom-printed merchandise. At the top center is a pink hoodie featuring a colorful graphic of a character holding a cup labeled "diet zombie pop". To its right is a dark blue tank top with a red and white abstract pattern. Below the hoodie are several items: a set of colorful lanyards with different logos, a pair of red and white sneakers with a bold geometric pattern, a smartphone with a portrait of a woman, a mug with a flame design, and a small square photo of a person. On the far right, there's a large, detailed print of a London street scene featuring Big Ben, the London Eye, and a red double-decker bus. Another print shows a mountain landscape under a blue sky.

[illegible]

ENHANCED, AUTOMATED WORKFLOW SUPPORT

Automate incoming file management across a local network and/or from files submitted online. Jobs can be sorted automatically and directed to various printer queues using Hot Folders integration. Take automation a step further by adding the Automatic Job Sorter (AJS) module and set up a single, rules-based "super hot folder" that sorts jobs even more efficiently.



FEATURING COMPASS!

The ultimate all-in-one learning resource.
Help documents, how-to's, videos all
included in one easy access location.



MULTI LANGUAGE SUPPORT.

Software and learning resources
available in 8 languages!

DIGITAL FACTORY SUBLIMATION EDITION INCLUDES ALL THE FEATURES YOU NEED

GENERAL RIP FEATURES

- Windows® 10, 8 and 7 support (32 & 64 bit)
- Optimized printer performance. Customized direct to printer drivers for widely used sublimation printers
- Virtually unlimited printer support via Windows printer drivers (GDI)
- Optimized RIP processing speeds
- Start to finish .pdf workflow support
- Send jobs directly to queues from design applications (PhotoShop®, Corel®, Illustrator®)
- RIP once, print many
- Professional color profiles for soft and hard materials included
- Template creation support for simplified print layout and design
- "Knock out" colors tool. Simplified removal of white, black or other color removal from designs.
- Automatic trapping in queues
- High Speed printmodes with no quality reduction
- Multiple ink/transfer paper options supported
- Lightning fast 64-bit architecture
- Optimized multiple job processing (RIP threading)
- Simplified navigation; Easy queue menu tabs, page view and job properties
- Grid option in job preview window
- Instant access to job information using "mouse-over image"
- Automated TCP/IP port search for easier network printing setup
- Quick job reprints with save job backup (.jpb file) option
- Export queues and printer packages

- Worldwide language support using Unicode
- 4K Display Support

COLOR MANAGEMENT TOOLS

- High fidelity, ICC compliant color management engine (ColorLogic)
- Simple ink volume controls
- Complete manual color curve controls by image detail (shadows, mid-tones, highlights)
- Advanced color correction tools interface
- Easy color adjustments
- Color adjustment wizard for merging ICC rendering intents
- Easy-access to printmodes and printmode overrides

PRE-PRODUCTION TOOLS

- Step and repeat. Automated repeatable pattern tool eliminates the need for file preparation in third-party design applications.
- Visual print preview
- Raw data preview
- Multi-copy with spacing controls (In-Queue feature)
- Cropping controls of image and job (In-Queue feature)
- Rotation controls of image and job (In-Queue feature)
- Mirror, invert image and job (In-Queue feature)
- Scale image and job to any size (In-Queue feature)
- Soft proofing
- Built-in special effects/filters (distressed, distressed frames, sharpen)

- Updated Supersize filter functionality for improved image resolution
- Job color replacement
- Simple application of choke to white underbase
- Export template layouts with improved template user interface
- Image duplication interface

JOB MANAGEMENT AND SCHEDULING TOOLS

- Unique, single window visual interface, one central easy to manage hub for all jobs
- Simplified single queue interface with queue-copy feature to add queues as required.
- Easy to use queue set-up wizard. Set up production queues quickly and easily
- Auto-scheduling or manual scheduling of jobs
- On-the-fly job prioritization using simple drag and drop
- Job archiving, history, print status and job log
- Job notes
- Hot folder support
- Gmail support. Send jobs directly to queues using mobile devices via Gmail
- Bar code support for automated production
- Enhanced plug-ins for Corel®, Illustrator® and Photoshop® that send print jobs directly to production queues with automated white underbase created. No cumbersome job preparation required.
- High volume production options available (RIP Server + Multiple machine support, added cost applied)

CADLINK FAMILY OF SOFTWARE PRODUCTS

Discover the benefits of using a single source for all your design and production requirements



www.cadlink.com

Digital Factory is a registered trademark of CADlink Technology Corporation.

All other trademarks are a property of their respective owners.

CONNECT WITH US:



CADLINK CANADA:

2150 Thurston Drive,
Suite 101, Ottawa, ON
K1G 5T9, Canada

Tel: (613) 247-0850
Sales Hotline:
1-800-545-9581

Sales@cadlink.com

CADLINK USA:

500 Main Street,
Clinton, MA
01510, USA

Tel: 1-800-545-9581
Sales Hotline:
1-800-545-9581

Sales@cadlink.com

CADLINK EUROPE:

Intech House,
Wilbury Way, Hitchin,
Herts, U.K. SG4 0TW

Tel: ++44 (0) 1462-
420222

Sales@cadlink.com

SYSTEM REQUIREMENTS:

CPU Intel i5-i7 2.6-3.0GHz

Storage 500 SSD or HDD
(SSD recommended)

RAM 8-12GB

COMPATIBLE WITH:

Windows® 10, 8 and 7