

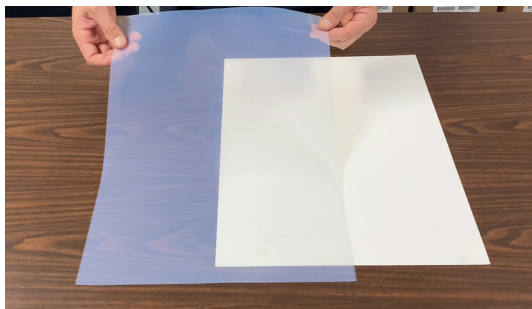
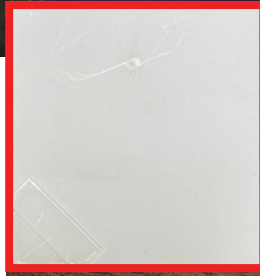
GO ET-15000 SP Film Setup

ScreenMate™ Film Installation on ET-15000

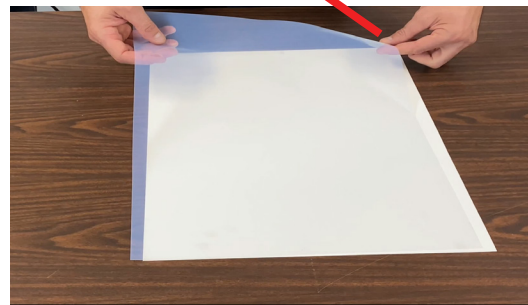
This technical bulletin describes the procedure on how to print film with the GO ET-15000 printer.

1. With the printer, you will receive a box of film and the ScreenMate™ Film Guide. The ScreenMate™ Film Guide is needed so the media sensor will detect the film for imaging.

Prepare one sheet of ScreenMate™ Film and ScreenMate™ Film Guide. The ScreenMate™ Film Guide is the white which is included with each box of film.



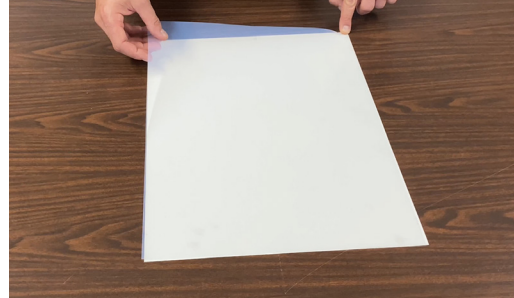
2. Prepare one sheet of Screenmate™ Film and the ScreenMate™ Film Guide. The ScreenMate™ Film must have the printing side facing up.



3. Insert one of the corners of the ScreenMate™ Film on the Film Guide.



4. ScreenMate™ Film needs to be aligned with the edge when it is inserted into the Film Guide corner.



5. The Screenmate™ Film Guide has a double-sided piece of tape at the bottom, that starts at the center, and goes to the right edge.



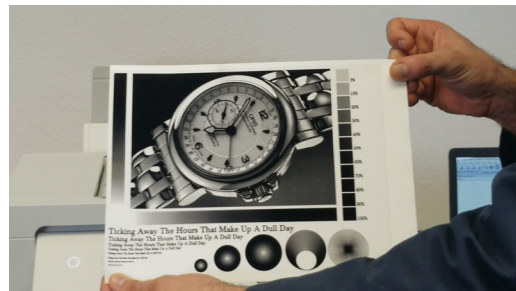
5. Please remove the protective tape cover and press the film firmly along the tape to adhere the film to the guide.



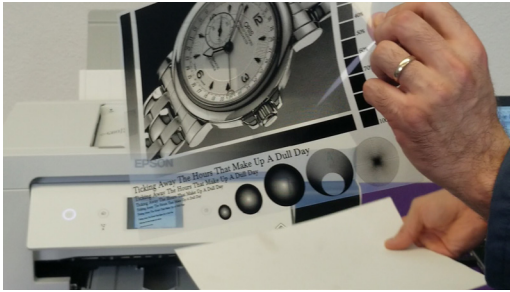
6. Load the ScreenMate™ together with the Film Guide with the corners first and the printing side facing up.



7. Send your file to the GO ET-15000 SP printer using your preferred application (FilmMaker or Design Software).



8. Remove the printed ScreenMate™ Film from the GO ET-15000 SP exit tray.



9. Separate the ScreenMate™ Film from the Film Guide.



10. The ScreenMate™ Film will be ready to use.

Note: The ScreenMate™ Printing System includes Film Guides for the different ScreenMate™ Film sizes. Also, you will find additional double-sided tape should the original piece lose its adhesive.