

CadLink FilmMaker

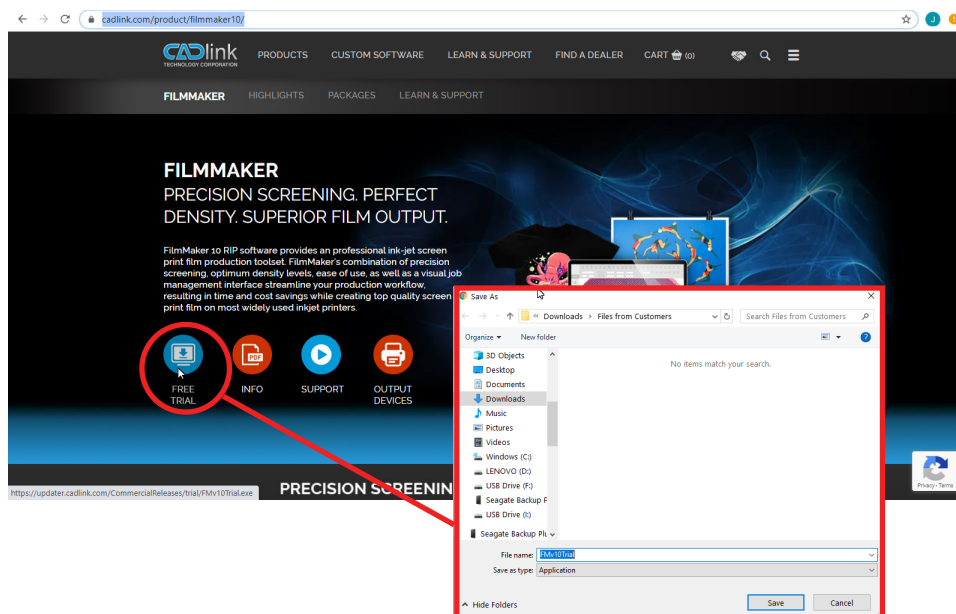
Film Maker RIP Setup, no Dongle installation

This bulletin describes the procedure on the Setup Install for FilmMaker Rip Software. (This procedure is the same for GO ET-15000 and GO-3170x SP)

1. In your browser, go to:

<https://www.cadlink.com/product/filmmaker10/>

Click on free trial, and the file will be downloaded in your computer.



2. Run the downloaded file and select the Software you will use:

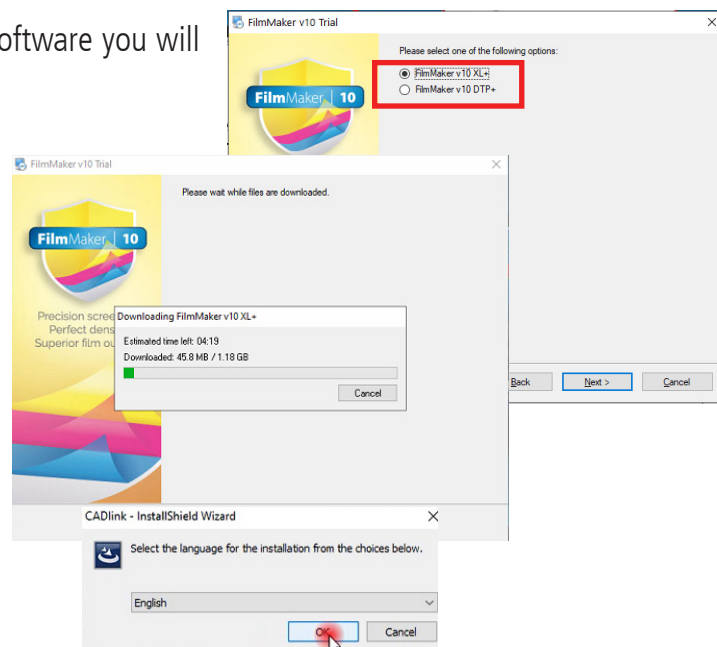
FilmMaker XL Plus (All the Printer Drivers)

Film Maker DTP Plus. (Small Format)

Software installer will be downloaded and will run automatically.

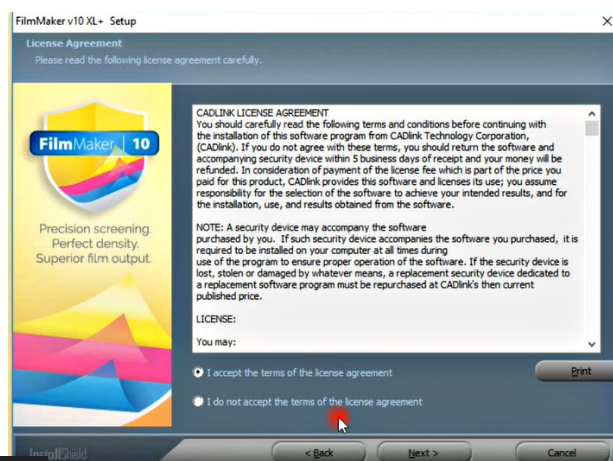
Follow the Installation Wizard Instructions and then click Finish. (The installer will not look for a USB dongle).

Choose your installation language

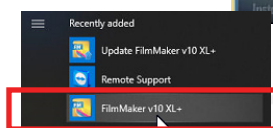


Follow the instructions the wizard will provide.

The installer will let you know once the installation process is finished. Hit **Close** when finish.



From your installed software list, select Film Maker software and run it.



As soon as you run the software, it will open a window asking for the registration.

Select **Click here if you have a PIN number and you wish to activate.**



Add the **Software Activation PIN**, you will receive this PIN via email and in your invoice.

Fill the form with your information and click on **Submit** on the bottom of the form.

3. The software will open the **Queue Wizard** and it will help you install the printer.

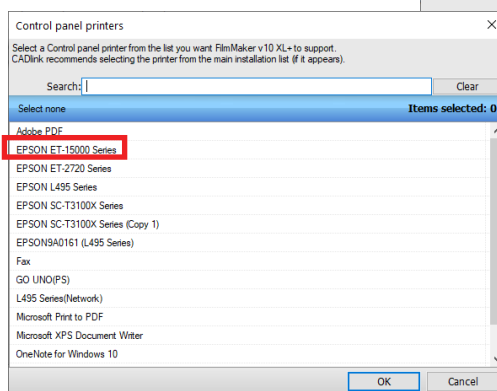
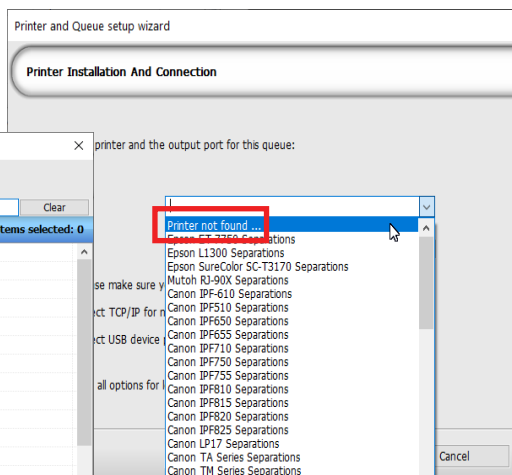
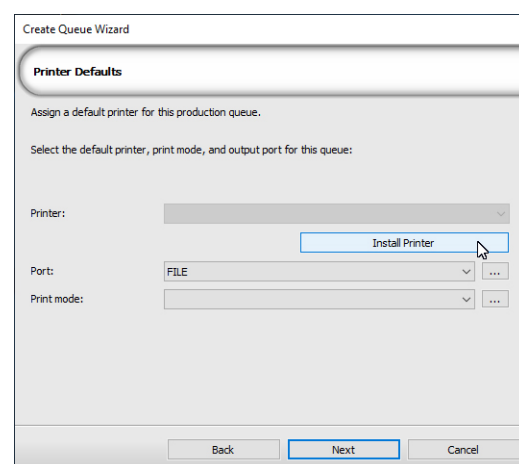
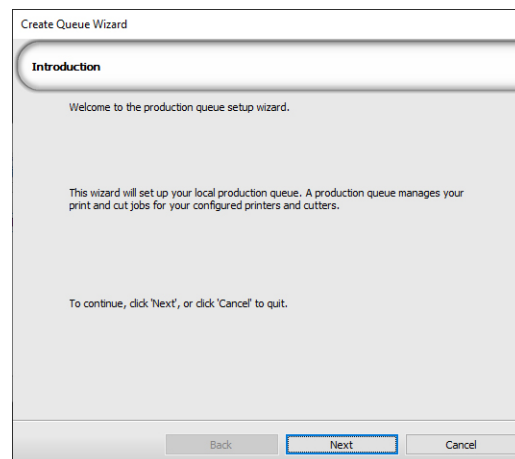
Note: Printer must be loaded with ink and connected to the computer.

Read each step, and press **Next**.

Click on Install Printer and select the *GO-ET Printer you have.
* GO-3170x SP.

Note: For GO ET-15000 observe this instructions:

- On the printers list, select **Printer not found...**
- All the printers installed in your Windows Systems will show up. Select the **ET-15000** from the list.



Select the Printer Port EPSONNET XXXX. This port can be USB or Network, depending on the printer connection to the computer.

Note: WiFi connection is consider a Network Connection

Create Queue Wizard

Printer Defaults

Assign a default printer for this production queue.

Select the default printer, print mode, and output port for this queue:

Printer: Graphics One Printer

Port: FILE

Print mode: <Select Print Mode>

Back Next Cancel

The Print Mode has a dropdown list. Select the default one.

Note on Print Modes:

The print modes are the settings (Paper Type, Resolution, Feed) needed to print for specific applications. This can be modified based on your needs.

Create Queue Wizard

Printer Defaults

Assign a default printer for this production queue.

Select the default printer, print mode, and output port for this queue:

Printer: Graphics One Printer

Port: EPSONNET-

Print mode: <Select Print Mode>

Back Next Cancel

You can select how many Channels you will use to create your films. (1 Blak / Multiple Black), this depends on the printer you are using, also you can rename the printer with your own description.

Create Queue Wizard

Name Your Production Queue

Enter a name for your production queue:

Separations Printer

Your application supports the ability to create multiple queues. To create and set up other queues, please use the 'Queue->Add Queue' menu option.

Note that each queue must have a unique name.

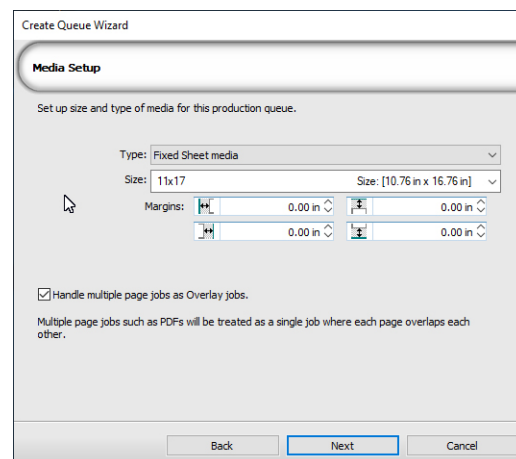
Back Next Cancel

Select the type of media you will use in your printer.

For **GO ET-15000** select Fixed Sheet Media from the Type dropdown menu, and then choose your default media size you will print on.

For **GO-3170x SP** select Roll Media from the Type dropdown menu. If you plan to use cut sheets, you can select the size before printing.

This size can be changed during normal RIP operation based on your workflow.



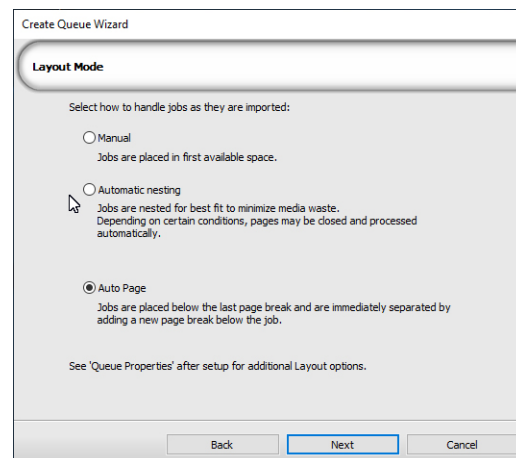
Note: Any PDF File with multiple sheets, need to be managed as separate pages. For this, uncheck Handle multiple page jobs as Overlay jobs. (See Image).

In the layout mode you can select how the new imported files will be managed.

Manual: You can move them freely to your desired section in the page if they are smaller than the media size.

Automatic Nesting: Based on the sizes, the RIP will reduce the media waste and will fit the images next to each other with little to no space in between.

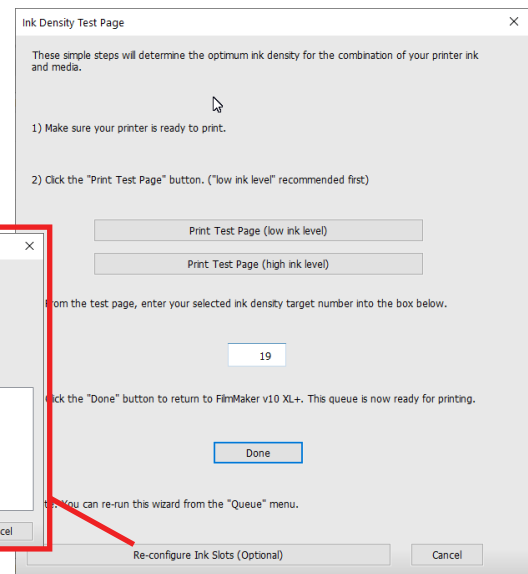
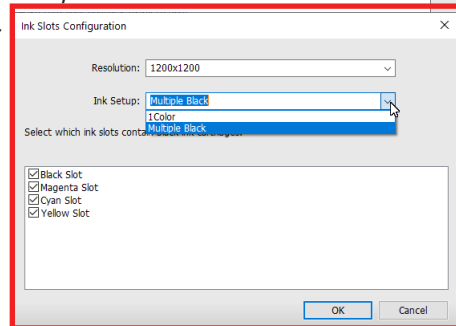
Auto Page: Every new imported image or file, will be located in a new page.



Once you finish with the printer installation, a window will prompt in order to print a **Density Test Page**. This way you can have the right black density for your prints.

When you reconfigure the inks slots, the resolution can also be modified in order to reach your desired density

Print your test page with the 2 ink level options (Low/High). Each print will have number from 1 to 20. Select the test number that shows your expected density and enter it .



4. You are ready to work with FilmMaker

5. For training videos visit our Official Youtube Channel.