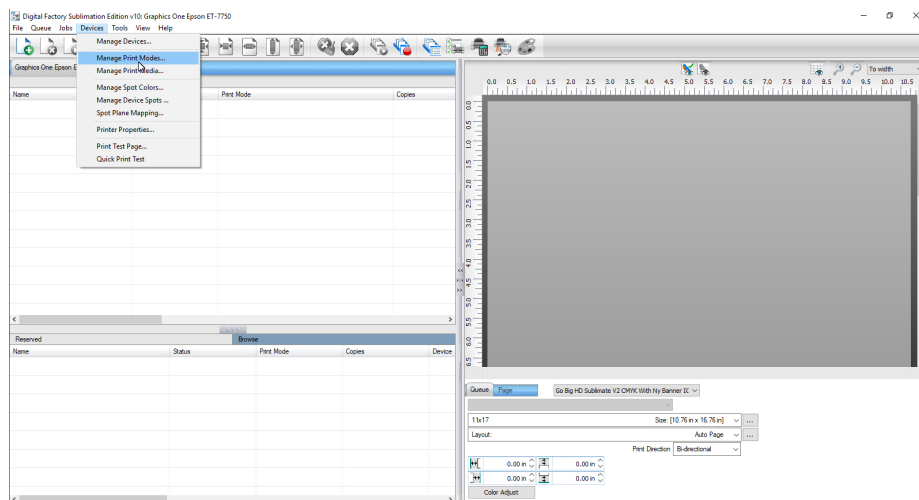


Digital Factory Sublimation Print Mode Update

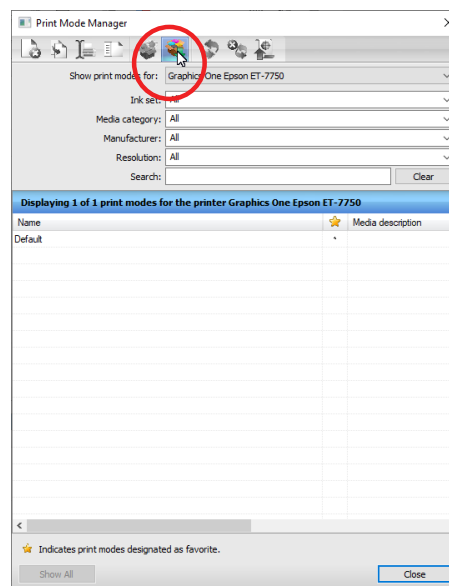
How to load new Print Modes on CAD Link.

This guide describes the procedure on how to load and save new print modes on Digital Factory Sublimation.

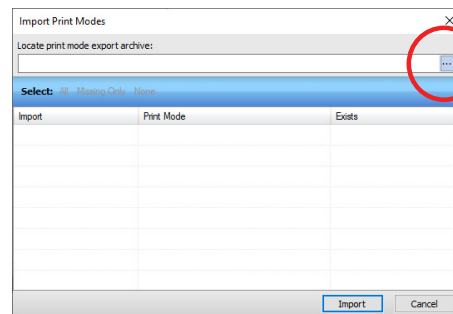
1. Save your Print Mode Package in your hard drive. In CadLink Digital Factory, open **Devices Menu** in your software and select **Manage Print Modes**.



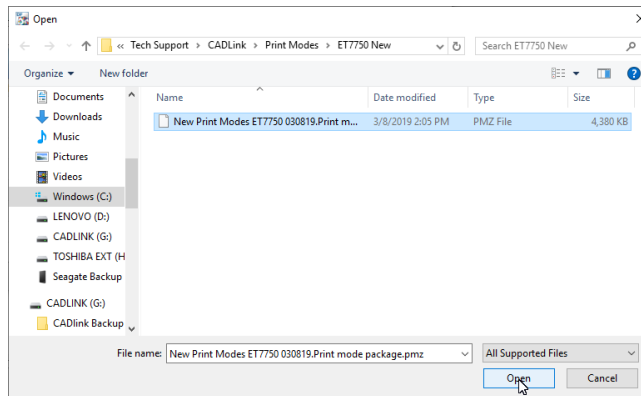
2. A new window will show up. Select the Icon **Import Print Mode Package**.



3. In the new window click on the 3 dots, to search for the location where the Print Mode Package was saved.

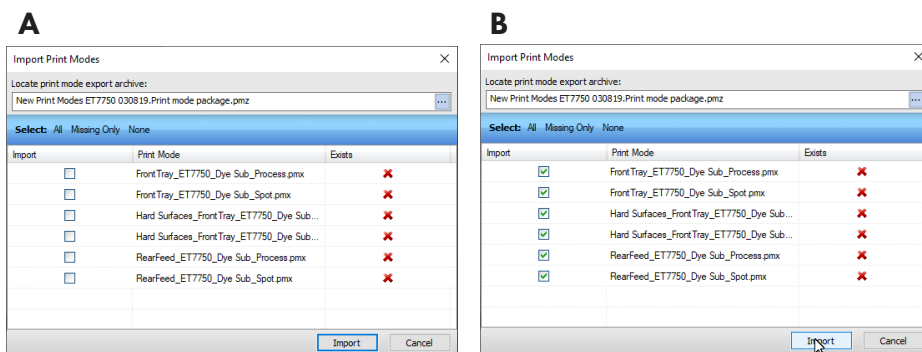


4. Select the saved Print Mode.



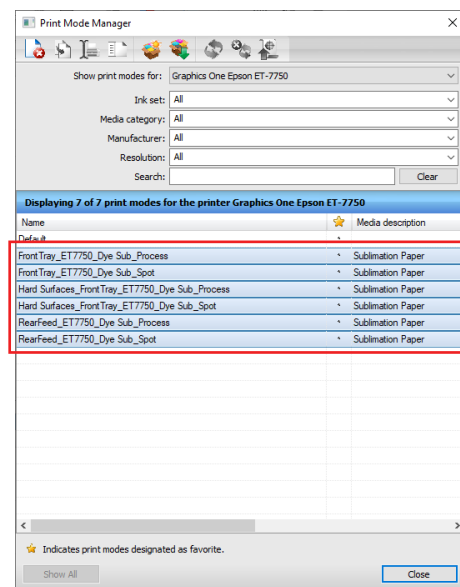
5. In the new window you will see the New Print Mode Packages with a red **X**, meaning you don't have them installed.

Select the boxes and click **Import**.

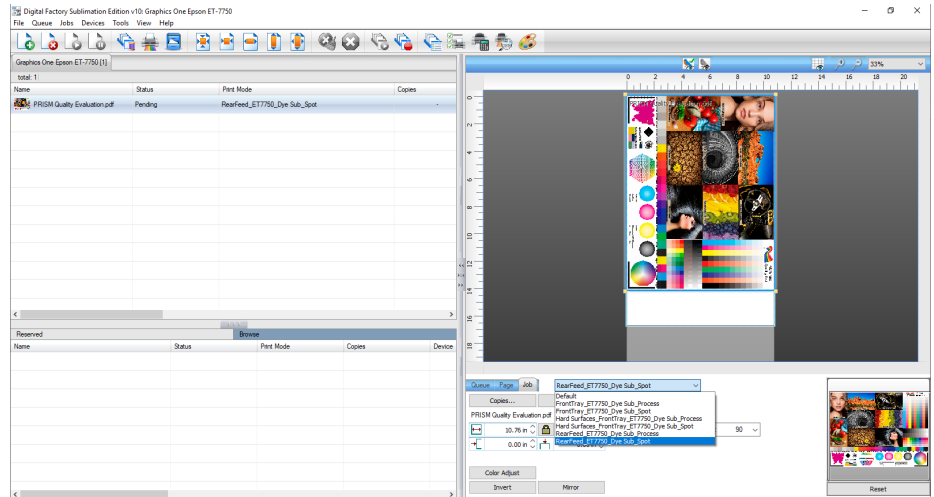


6. Once the new optimized profiles have been downloaded in the Print Mode Manager window, the imported Print Modes will be update.

Close the window.



7. Open your file and from the drop down list, the new Print Modes can be selected.



Note: Each file name indicates from which section of the printer the paper will be printed from (Example, Rear Feed or Front Tray).

Hard surfaces must be printed with the **Hard Surface Print Mode** and from the front tray only.

Difference between Spot and Process:

Spot: Can use the Neon Yellow as a spot color channel.

Process: Will mix Yellow and Neon Yellow channels during printing.

8. Once selecting the appropriate **Print Mode**, press **Print**.

