

ET-2750 Start up Guide

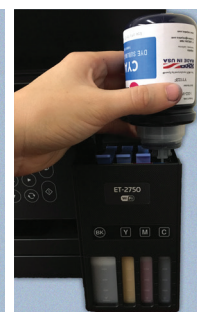
How to load Dye Sublimation Ink on ET-2750.

This guide describes the procedure on how to load Dye Sublimation Ink into the printer.

1. Unpack and remove all protective materials from the product.



2. Unpacking the ink bottles (Follow the Instructions)



- a. Take the bottle out of the poly bag and remove the **Black Tape**

- b. Unscrew the entire Cap. Break or remove the **Aluminum Seal**

- c. Put the lower part of the cap back on the bottle and load the inks as shown.

3. Filling the ink tanks.

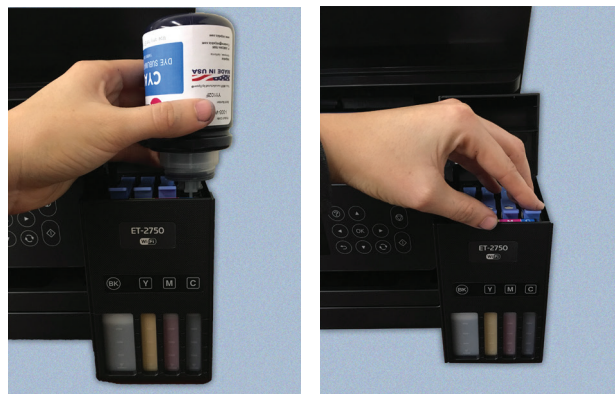
- a. Open the ink tank cover, then open the cap for the ink tank you are going to fill.



b. Position the top of the ink bottle along the slot in front of the filling port, then slowly stand the bottle up to insert it. Wait for ink to fill the tank.

Do not squeeze the bottle. Ink flows into the tank and stop automatically when the ink tank is full.

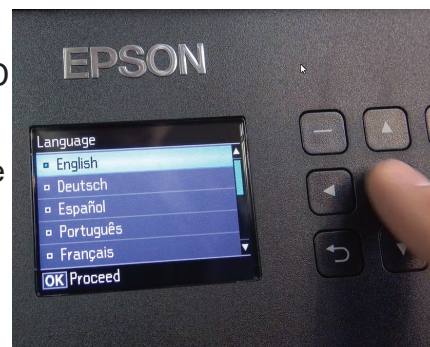
c. Remove the ink bottle once the ink tank is full and securely close the ink tank cap.



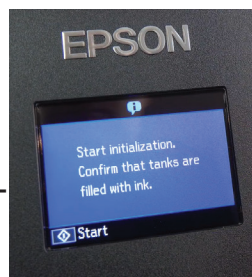
Repeat steps 3a-3c to fill the rest of the ink tanks, close the ink tank cover when finish.

4. Connect the power cord to the back of the product and to an electrical outlet. Raise the control panel, then press the power button to turn on the product. (Do not connect to the computer yet)

5. Press up or down arrows to select your language on the LCD screen. Next, press the OK button. When the message “Start Here” appears on the LCD screen, press the OK button. On the next screen, press and hold the OK button for 3 seconds.



When the message to “Start Initialization” appears on the LCD screen, press the start button to start charging the ink. Ink charging takes approximately 7 minutes. A message will appear when ink charging is complete.



6. Connect the printer to the PC, install your printer driver and ICC. Load the media and you are ready to print.

